



CEDARS-SINAI®

## Practicum in Mechanical Circulatory Support (MCS): Managing Cardiogenic Shock with Short-Term Devices

Friday, October 11, 2019

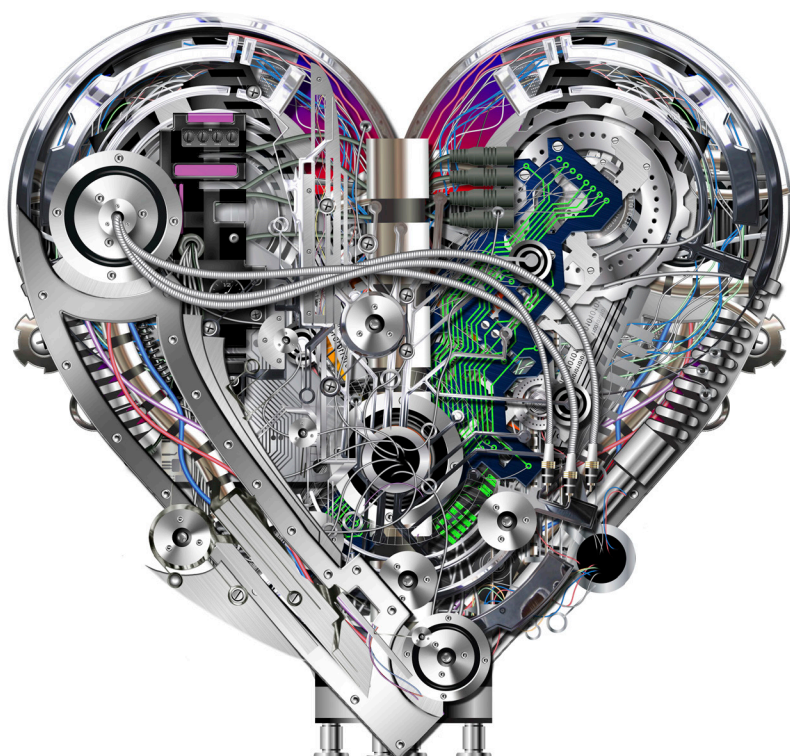
*Featuring your choice of one wet-lab session in the Women's Guild Simulation Center for Advanced Clinical Skills, an immersive environment equipped with the latest in patient simulators and medical devices.*

### **COURSE DIRECTORS**

Jaime Moriguchi, MD, FACC  
Danny Ramzy, MD, PHD, FACC  
Jon Kobashigawa, MD, FACC

### **CONFERENCE LOCATION**

Cedars-Sinai Medical Center®  
Harvey Morse Conference Center  
8701 Gracie Allen Drive  
Plaza Level, South Tower  
Los Angeles, CA 90048



For the latest course information and to register, visit:  
[cedars.cloud-cme.com/mcscme](https://cedars.cloud-cme.com/mcscme).

Endorsed by



California  
CHAPTER



Arizona  
CHAPTER



# ACTIVITY INFORMATION

## COURSE DESCRIPTION AND STATEMENT OF NEED

The Practicum in MCS: Managing Cardiogenic Shock with Short-Term Devices course will provide a concise review of clinical knowledge and essential professional skills, to facilitate the surgical and medical management of patients with advanced heart failure who are being assessed for and who have received mechanical circulatory support. The course consists of focused presentations covering a broad array of topics for patient management in an acute setting, with an emphasis on a practical approach to patient care, implementing best practices and clinical problem-solving. Attendees will participate in interactive case studies, and may select one of three wet labs in the afternoon. All participating practitioners will benefit from an understanding of the unique challenges in this patient population.

## ACCREDITATION STATEMENT

Cedars-Sinai Medical Center is accredited by the Accreditation Council for Continuing Medical Education to provide continuing medical education for physicians.



## CREDIT DESIGNATION STATEMENT

Cedars-Sinai Medical Center designates this live activity for a maximum of 8.25 *AMA PRA Category 1 Credits™*. Physicians should claim only the credit commensurate with the extent of their participation in the activity.

## NON-PHYSICIAN ATTENDANCE

Non-Physician Attendance (RN, NP, PA and Other Learners) Credit is provided to non-physicians who participate in activities that are designated for *AMA PRA Category 1 Credit(s)™*. The boards for AANP, NCCPA and ANCC accept courses approved by the ACCME for Category 1 Credit as meeting the continuing education requirements for license renewal.

# REGISTRATION FEES

## DIDACTIC & SIMULATION

Physicians	\$200
Non-Physicians	\$200

## DIDACTIC ONLY

Physicians	\$150
Non-Physicians	\$150
CSMC Non-Physician	\$75

TO REGISTER, VISIT [CEDARS.CLOUD-CME.COM/MCSCME](https://cedars.cloud-cme.com/mcscme)

# FACULTY

## COURSE DIRECTORS

**Jaime Moriguchi, MD, FACC**  
Medical Director,  
Mechanical Circulatory Support Program  
Cedars-Sinai Smidt Heart Institute

**Danny Ramzy, MD, PHD, FACC**  
Surgical Director, Lung Transplant Program  
Director, Robotic & Minimally Invasive  
Cardiac Surgery  
Assistant Professor, Surgery  
Cedars-Sinai Smidt Heart Institute

**Jon Kobashigawa, MD, FACC**  
Associate Director,  
Cedars-Sinai Heart Institute  
Director, Advanced Heart Disease Section  
Director, Heart Transplant Program  
Professor of Medicine  
DSL/Thomas D. Gordon Chair  
in Heart Transplantation Medicine  
Cedars-Sinai Smidt Heart Institute

## GUEST FACULTY

**Dan Burkhoff, MD**  
Columbia University

**Joanna Chikwe, MD**  
The Icahn School of Medicine at Mount Sinai,  
State University of New York

**Shelley A. Hall, MD, FACC**  
Baylor University Medical Center

**James Kirklin, MD, FACC**  
University of Alabama at Birmingham

**Nader Moazami, MD**  
New York University

**Joseph Rogers, MD, FACC**  
Duke University School of Medicine

## CEDARS-SINAI FACULTY

**Babak Azarbal, MD, FACC**  
**Robert Cole, MD, FACC**  
**Dominic Emerson, MD**

**Jennifer Hajj, BSN**  
**Dominick Megna, MD**  
**Carmelita Runyan, MSN**

# AGENDA

7:30 a.m.	Welcome & Continental Breakfast
<b>OPENING SESSION</b>	<b>Short Term Devices: Patient and Device Selection</b> <b>Moderators: Jaime Moriguchi, MD, FACC; Joanna Chikwe, MD</b>
8:00	Welcome <i>Jaime Moriguchi, MD, FACC and Danny Ramzy, MD, PHD, FACC</i>
8:10	The Aftermath of the New Unos Heart Allocation: One-Year Impact on MCS Utilization <i>Joseph Rogers, MD, FACC</i>
8:35	The Use of ECMO in Cardiogenic Shock: Advantages and Limitations <i>Nader Moazami, MD</i>
9:00	Impella and Tandem Heart: Pearls and Pitfalls <i>Danny Ramzy, MD, PHD, FACC</i>
9:25	IAB vs. Impella vs. ECMO: Which is Hemodynamically Superior? <i>Dan Burkhoff, MD</i>
9:50	Panel Discussion
10:10	Break and Exhibits
<b>MID-MORNING SESSION</b>	<b>Nuances of Mechanical Circulatory Support</b> <b>Moderators: Danny Ramzy, MD, PHD, FACC; Joseph Rogers, MD, FACC</b>
10:25	New Options In Percutaneous Mechanical Circulatory Support Devices <i>Babak Azarbal, MD, FACC, FACC</i>
10:50	Selecting Wisely: The Benefits and Limitations of MCS Technology <i>Shelley A. Hall, MD, FACC</i>
11:15	Understanding Frailty vs. Resiliency in the MCS Candidate <i>Jon Kobashigawa, MD, FACC</i>
11:40	Panel Discussion
12:00 p.m.	Lunch and Roundtable Discussion: Moderator: <i>Robert Cole, MD, FACC</i> Panelists: <i>James Kirklin, MD, FACC, FACC; Nader Moazami, MD; Jon Kobashigawa, MD, FACC</i>
12:30 - 1:15	Donor Heart Selection for MCS Patients: Provocative Cases <i>Danny Ramzy, MD, PHD, FACC</i>
<b>AFTERNOON SESSION</b>	<b>Interactive Case Studies</b> <b>Moderator: Dominick Megna, MD</b> <b>Panelists: Shelley A. Hall, MD, FACC; Dan Burkhoff, MD; Joseph Rogers, MD, FACC; Nader Moazami, MD; James Kirklin, MD, FACC</b>
1:30	Case Study #1 - Crash and Burn: What Can We Learn? <i>Dominic Emerson, MD</i>
1:50	Case Study #2 - Short-Term or Short-Sighted? <i>Jaime Moriguchi, MD, FACC</i>
2:10	Case Study #3 - Durable but Not Endurable? <i>Jennifer Hajj, BSN</i>
2:30	Case Study #4 - MCS in Women <i>Carmelita Runyan, MSN</i>
2:50	Case Study #5 - Destination vs. Destiny <i>Robert Cole, MD, FACC</i>
3:10	Break and Exhibits
<b>CLOSING DIDACTIC SESSION</b>	<b>Pioneer Lecture</b> <b>Moderator: Jon Kobashigawa, MD, FACC</b>
3:25	Featured Lecture - Pioneers in MCS: A Trailblazer's Perspective <i>James Kirklin, MD, FACC</i>
3:55	Final Thoughts and Adjourn <i>Jon Kobashigawa, MD, FACC</i>
<b>SIMULATION SESSION</b>	<b>Wet Lab Experience (Select One)</b> <b>Simulation Facilitator: Carmelita Runyan, MSN</b>
4:00 - 4:30	① ECMO Wet Lab    ② Impella Wet Lab    ③ Tandem Heart Wet Lab
4:30 - 5:00	Debriefing Session    Debriefing Session    Debriefing Session
5:00 p.m.	Adjourn



CEDARS-SINAI®

8797 Beverly Blvd., Suite 250  
Los Angeles, CA 90048

Non-Profit Org.  
U.S. Postage  
PAID  
Los Angeles, CA  
Permit #22328



# Practicum in Mechanical Circulatory Support (MCS): Managing Cardiogenic Shock with Short-Term Devices

Friday, October 11, 2019  
Cedars-Sinai Medical Center

EARN UP TO 6.5 AMA PRA CATEGORY 1 CREDITS™

To register, visit: [cedars.cloud-cme.com/mcscme](https://cedars.cloud-cme.com/mcscme)