



**CEDARS-SINAI**

CONTINUING MEDICAL EDUCATION

8797 Beverly Blvd., Suite 250  
Los Angeles, CA 90048

Non-Profit Org.  
U.S. Postage  
PAID  
Los Angeles, CA  
Permit #22328

## Advances in Nuclear Cardiology, Cardiac CT and Cardiac MRI: 34th Annual Case Review with the Experts

FRIDAY, JANUARY 18, 2019 - SUNDAY, JANUARY 20, 2019  
CEDARS-SINAI MEDICAL CENTER

### CASE-ORIENTED COURSE TOPICS INCLUDE:

- Nuclear Cardiology**
  - Clinical applications and evidence
  - Amyloidosis, sarcoidosis, device infections
  - Coronary flow reserve with PET and SPECT
- Coronary CTA**
  - Clinical applications and evidence
  - Importance of plaque and plaque measurements
  - Fractional flow reserve

### Cardiac MRI

- Simplifying methods
- Unique applications

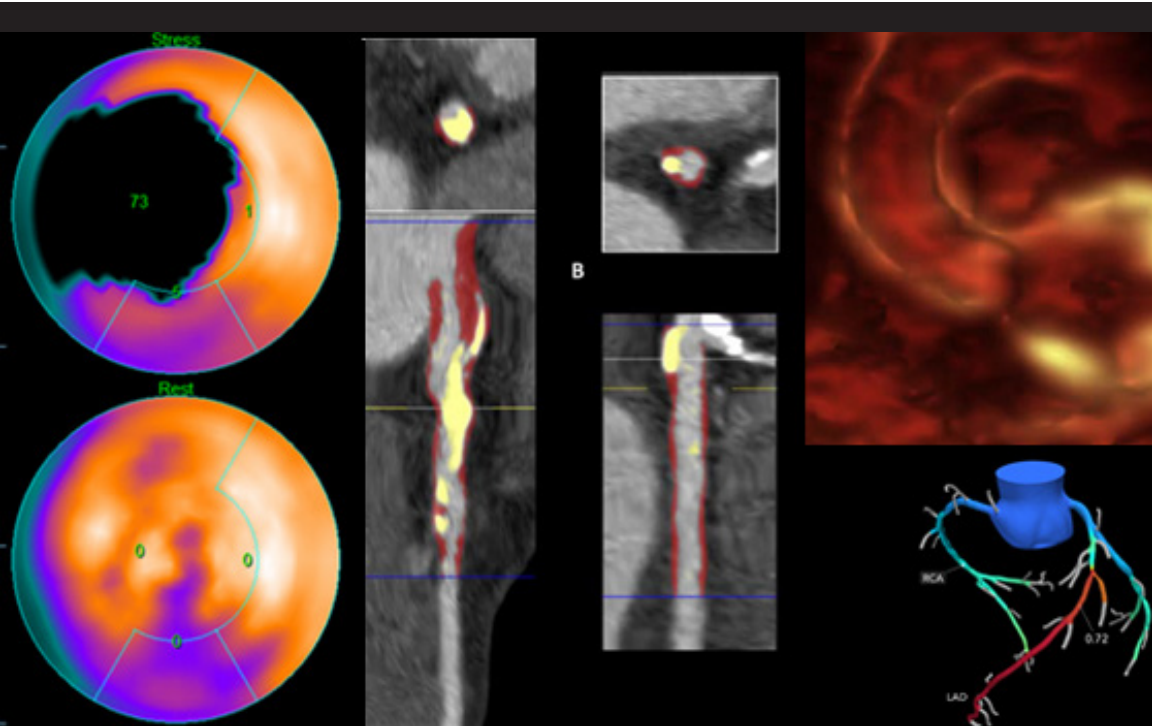
### Best Articles of 2018

### Guidelines and Best Practices

- Which test and when?
- Improving value

Earn up to 25 AMA PRA Category 1 Credits™!

To register, visit: [cedars.cloud-cme.com/nuclearcardiologycme](http://cedars.cloud-cme.com/nuclearcardiologycme)



**CEDARS-SINAI**

SMIDT HEART INSTITUTE

## Advances in Nuclear Cardiology, Cardiac CT and Cardiac MRI: 34th Annual Case Review with the Experts

FRIDAY, JANUARY 18, 2019 - SUNDAY, JANUARY 20, 2019

### COURSE DIRECTORS

Daniel Berman, MD, FACC, FSCCT  
Guido Germano, PhD, MBA, FACC  
James Min, MD, FACC, FSCCT  
Alan Rozanski, MD

### CONFERENCE LOCATION

Cedars-Sinai Medical Center  
Harvey Morse Conference Center  
8700 Gracie Allen Dr.  
Los Angeles, CA 90048

To register, visit: [cedars.cloud-cme.com/nuclearcardiologycme](http://cedars.cloud-cme.com/nuclearcardiologycme)

Co-sponsored by the American Society of Nuclear Cardiology, the Society of Cardiovascular Computed Tomography, the California Chapter of the American College of Cardiology, the Arizona Chapter of the American College of Cardiology and the International Academy of Cardiology.



California  
CHAPTER



Arizona  
CHAPTER



INTERNATIONAL  
ACADEMY OF  
CARDIOLOGY

# ACTIVITY INFORMATION

“Advances in Nuclear Cardiology, Cardiac CT and Cardiac MRI: 34th Annual Case Review with the Experts” is a three-day live course designed to meet the current needs of professionals who perform or request nuclear cardiology, cardiac CT or cardiac MRI studies. The course covers the use of these modalities across the spectrum of patients routinely seen in typical day-to-day practice. The faculty is uniquely comprised of 26 of the most widely recognized speakers in nuclear cardiology, cardiac CT and cardiac MRI world wide.

## CASE-ORIENTED COURSE TOPICS INCLUDE:

- Nuclear cardiology
- Coronary CTA
- Cardiac MRI
- Best articles of 2018
- Guidelines and best practices.

## ACCREDITATION STATEMENT

Cedars-Sinai Medical Center is accredited by the Accreditation Council for Continuing Medical Education to provide continuing medical education for physicians.

## CREDIT DESIGNATION STATEMENT

Cedars-Sinai Medical Center designates this live activity for a maximum of 25.0 *AMA PRA Category 1 Credits™*. Physicians should claim only the credit commensurate with the extent of their participation in the activity.

## NON-PHYSICIAN ATTENDANCE

Non-Physician Attendance (RN, NP, PA and Other Learners) Credit is provided to non-physicians who participate in activities that were designated for “AMA PRA Category 1 Credit(s)™.” The boards for AANP, NCCPA and ANCC accept courses approved by the ACCME for Category 1 Credit as meeting the continuing education requirements for license renewal.

## CE CREDIT FOR TECHNOLOGISTS

The American Society of Nuclear Cardiology is a recognized provider of continuing education credit for technologists. ASNC’s Continuing Education (CE) credit is accepted by the NMTCB and ARRT. Approved by the American Society of Nuclear Cardiology for a maximum of 20.5 ARRT Category A credits for technologists.

## REGISTRATION FEES

Physicians	\$695
Non-Physicians	\$395
Resident/Fellows	\$295

To register, visit: [cedars.cloud-cme.com/nuclearcardiologycme](https://cedars.cloud-cme.com/nuclearcardiologycme)

## HOTEL ACCOMMODATIONS

### Sofitel Los Angeles at Beverly Hills

8555 Beverly Blvd., Los Angeles, CA 90048  
310-278-5444

CSMC has arranged for a block of rooms at the Sofitel Los Angeles at Beverly Hills. A limited number of Superior King rooms are available at a special conference rate of \$279 per night, plus tax. Reservations are taken on a first-come, first-served basis.

Each individual guest must make their own reservations by calling 310-278-5444 no later than Friday, January 11, 2019. Please identify yourself as an attendee of the Cedars-Sinai Nuclear Cardiology Conference.

All reservations must be guaranteed and accompanied by a first-night room deposit or guaranteed with a major credit card.

# AGENDA

## FRIDAY, JANUARY 18, 2019

SESSION 1: Advances in SPECT and PET

SESSION 2: Optimizing Impact of Nuclear Cardiology

SESSION 3: Radiopharmaceuticals, Cameras, Software

SESSION 4: Applications of Nuclear Cardiology / Read with the Experts

## SATURDAY, JANUARY 19, 2019

SESSION 5: New Clinical Applications of Nuclear Cardiology

SESSION 6: New and Future Developments in PET and SPECT

SESSION 7: Nuclear Cardiology and Cardiac CT

SESSION 8: Imaging Practice Trends and Cardiac MRI

## SUNDAY, JANUARY 20, 2019

SESSION 9: Advances in Cardiac CT

SESSION 10: Best Papers and Best Cases: CT Battle of the Experts

SESSION 11: Cardiac CT in Aortic Stenosis and Non-Coronary Heart Disease

*For a complete agenda, please visit: [cedars.cloud-cme.com/nuclearcardiologycme](https://cedars.cloud-cme.com/nuclearcardiologycme)*

# FACULTY

## COURSE DIRECTORS

**Daniel S. Berman, MD, FACC, FSCCT**  
Chief, Cardiac Imaging and Nuclear Cardiology  
Cedars-Sinai Smidt Heart Institute  
Medical Director, Artificial Intelligence  
in Medicine Program  
Professor of Imaging  
Cedars-Sinai Medical Center

**Guido Germano, PhD, MBA, FACC**  
Director, Artificial Intelligence  
in Medicine Program  
Cedars-Sinai Medical Center

**James Min, MD, FACC, FSCCT**  
Professor, Radiology and Medicine,  
Weill Cornell Medicine  
Director, Dalio Institute  
of Cardiovascular Imaging  
New York Presbyterian and Weill Cornell

**Alan Rozanski, MD**  
Director, Nuclear Cardiology  
and Cardiology Fellowship Training  
Professor of Medicine  
Mount Sinai St. Luke’s Hospital

## GUEST FACULTY

**Timothy M. Bateman, MD, FACC**  
University of Missouri,  
Kansas City School of Medicine

**Ron Blankstein, MD, FACC, FASNC, FSCCT**  
Harvard Medical School

**Matthew J. Budoff, MD, FACC, FSCCT**  
Los Angeles Biomedical Research Institute

**Tracy Q. Callister, MD, FACC, FASNC,  
FSCCT, FACP**  
Tennessee Heart & Vascular Institute

**Panithaya Chareonthitawee, MD**  
Mayo Clinic

**Marc Dweck, MD, PhD, FACC**  
University of Edinburgh

**Jonathon Leipsic, MD, FSCCT**  
University of British Columbia

**Jamshid Maddahi, MD, FACC, FASNC**  
David Geffen School of Medicine at UCLA

**Gregory S. Thomas, MD, MPH, FACC, MASNC**  
Memorial Care Heart & Vascular Institute  
UC Irvine

**Todd C. Villines, MD, FACC, FAHA, FASNC,  
FSCCT**  
Walter Reed National Military Medical Center

**Jack Ziffer, PhD, MD, FACC, FAHA, FASNC,  
FSCCT**  
Baptist Health South Florida

## CEDARS-SINAI FACULTY

**C. Noel Bairey Merz, MD, FACC, FAHA, FESC**  
**Anthony Christodoulou, PhD**  
**Damini Dey, PhD, FSCCT**  
**Rohan Dharmakumar, PhD**  
**John Friedman, MD, MD, FACC, FSCCT**  
**Sean W. Hayes, MD**

**Prediman Shah, MD, MACC**  
**Piotr Slomka, PhD**  
**Balaji Tamarappoo, MD, FACC**  
**Louise Thomson, MD, MBChB, FRACP**  
**Serge Van Kriekinge, PhD**