



CEDARS-SINAI®

# 10th Annual Los Angeles Orthopedic Trauma Symposium “Masters Course”

---

SATURDAY, SEPTEMBER 29, 2018

## COURSE DIRECTOR

Donald A. Wiss, MD

## FACULTY FOR THIS CONFERENCE INCLUDE LEADERS IN ORTHOPEDIC TRAUMA

Daniel Horwitz, MD

Sumant “Butch” Krishnan, MD

Michael McKee, MD

Steve Morgan, MD

Melvin Rosenwasser, MD

Roy Sanders, MD

Andrew Schmidt, MD

To register,  
visit [cedars.cloud-cme.com/  
orthotraumacme](https://cedars.cloud-cme.com/orthotraumacme)



10th Annual Los Angeles

# ORTHOPEDIC TRAUMA

Symposium “Masters Course”

Orthopedic trauma involves serious injuries to bones and joints, including complex fractures and dislocations that can result in complications. These potentially limb-threatening or life-altering injuries are commonly the result of high-energy trauma from car accidents, falls, sporting activities and industrial accidents, and require critical decision-making strategies for immediate care and surgical interventions. With more patients with complex injuries remaining at the admitting hospital, the responsibility for care rests with surgeons practicing at non-trauma hospitals. This has increased the need for surgeons who take emergency calls to be current with contemporary methods of fracture management.

The *10th Annual Los Angeles Orthopedic Trauma Symposium “Masters Course”* will present the latest techniques and algorithms in the care of patients with complex upper- and lower-extremity injuries. Expert faculty will explore improving outcomes for various non-operative and surgical interventions, address soft-tissue injuries, open versus closed fractures and fixation options, and discuss classification-based treatment strategies and best practices in current trauma care, using a combination of didactic lectures, case studies, panel discussions and audience engagement.

## TARGET AUDIENCE

This activity is designed to meet the educational needs of orthopedic surgeons, emergency room physicians, physician assistants, residents, fellows, nurse practitioners and registered nurses on the latest techniques and algorithms for the care of patients with complex musculoskeletal problems.

## EDUCATIONAL OBJECTIVES

- Discuss emerging technologies and methodologies in the management of upper- and lower-extremity fractures
- Recognize the mechanism of injury and surgical approaches used to treat “terrible triad” injuries while providing adequate stability for elbow range of motion
- Explain the benefits of operative and nonoperative management for clavicle fractures, and the indications for surgical management
- Recognize the various distal humerus fracture patterns and, where indicated, select the optimal plating application based on plate type and position, or identify other surgical or non-surgical approaches to treatment
- Apply acquired knowledge of anatomy, clinical examinations, imaging and arthroplasty for diagnosis and treatment of shoulder fractures and soft-tissue injuries
- Classify the different types of hindfoot and midfoot fractures, and select the proper diagnostic evaluation and surgical approach for each type of injury
- Anticipate and identify tibial plateau, shaft and pilon fracture characteristics, and develop a strategy for surgical reduction and fixation
- Apply orthopedic trauma assessment principles for hip and femur fractures, and evaluate surgical intervention options for fracture stabilization and treatment
- Prioritize treatment of injuries in the multiply injured patient and those with pelvic and acetabular fractures

# FACULTY

---

## COURSE DIRECTOR

### Donald A. Wiss, MD

Director, Orthopedic Trauma  
Cedars-Sinai Medical Center

## GUEST FACULTY

### Daniel Horwitz, MD

Chief, Orthopedic Trauma  
Geisinger Health System

### Sumant “Butch” Krishnan, MD

Director, The Shoulder Center  
Baylor University Medical Center  
Associate Professor,  
Department of Orthopedic Surgery  
Texas A&M Health Science Center

### Michael McKee, MD

Professor and Chairman,  
Department of Orthopedic Surgery  
University of Arizona College of Medicine  
Physician Executive Director,  
Orthopedic and Spine Institute

### Steve Morgan, MD

Director of Orthopedic Trauma  
Swedish Medical Center

### Melvin Rosenwasser, MD

Robert E. Carroll Professor of Orthopedic  
Surgery  
Chief of Orthopedic Trauma  
Columbia University College of Physicians  
and Surgeons

### Roy Sanders, MD

Chairman,  
Department of Orthopedic Surgery  
University of South Florida  
President, Florida Orthopedic Institute  
Editor in Chief,  
Journal of Orthopedic Trauma

### Andrew Schmidt, MD

Professor,  
Department of Orthopedic Surgery  
University of Minnesota  
Chief of Orthopedic Surgery,  
Hennepin County Medical Center

## MODERATORS

### Ryan DellaMaggiora, MD

Hand & Upper Extremity Service  
Cedars-Sinai Medical Center

### Thomas Kremen, MD

Division of Sports Medicine  
Cedars-Sinai Medical Center

### Carol Lin, MD

Orthopedic Trauma Service  
Associate Director,  
Orthopedic Residency Program  
Cedars-Sinai Medical Center

### Milton Little, MD

Orthopedic Trauma Service  
Cedars-Sinai Medical Center

### Charles Moon, MD

Associate Director,  
Orthopedic Trauma Service  
Cedars-Sinai Medical Center

### Mark Vrahas, MD

Levin-Gordon Chair in Honor  
of Myles Cohen  
Department of Orthopedic Surgery  
Cedars-Sinai Medical Center

# AGENDA

SATURDAY, SEPTEMBER 29, 2018

7:00-7:55 A.M. Registration, Breakfast and Exhibits

7:55-8:00 Welcome and Introductions

Donald A. Wiss, MD

## SESSION I: UPPER EXTREMITY FRACTURES

Moderators: Ryan DellaMaggiora, MD, and Donald Wiss, MD

8:00-8:45 Fractures of the Wrist, Forearm and Elbow

Melvin Rosenwasser, MD

8:00-8:15 Distal Radius Fractures  
Predictors of Instability, Non-Op vs. ORIF, Surgical Approaches, Outcomes

8:15-8:30 Diaphyseal Fractures of the Radius and Ulna  
Monteggia and Galeazzi Fractures, Surgical Approaches, DRUJ, Outcomes

8:30-8:45 Fractures and Dislocations Around the Elbow  
Classification-Based Treatment, Terrible Triad Injury, Radial Head Arthroplasty

8:45-9:00 Discussion

9:00-9:45 Fractures of the Clavicle and Humerus

Michael McKee, MD

9:00-9:10 Clavicle Fractures  
Indications for ORIF, Randomized Trials, Plate Type, Size and Position, Outcomes

9:10-9:25 Proximal Humerus Fractures  
Indications for ORIF, Randomized Controlled Trials, Technical Pearls, Outcomes

9:25-9:35 Diaphyseal Humeral Fractures  
Functional Bracing History, Surgical Approaches,  
the “Radial Nerve”

9:35-9:45 Distal Humerus Fractures  
Olecranon Osteotomy, Plate Position, Ulnar Nerve, Role of Arthroplasty

9:45-10:00 Discussion

10:00-10:15 Refreshment Break

## SESSION II: SHOULDER

Moderator: Thomas Kremen, MD

10:15-11:00 Fractures and Soft-Tissue Injuries in the Shoulder Including Arthroplasty Anatomy, Clinical Exam, Imaging, Rotator Cuff, Shoulder Arthroplasty for Fractures

Sumant “Butch” Krishnan, MD

11:00-11:15 Discussion

## SESSION III: FOOT FRACTURES

Moderator: Milton Little, MD

11:15-12:00 P.M. Fractures of the Talus, Calcaneus and Midfoot

Roy Sanders, MD

11:15-11:30 Talus Fractures  
Classification, Surgical Approaches, Implants, Timing, AVN, Outcomes

11:30-11:45 Calcaneus Fractures  
Classification, Randomized Trials, Extended vs. Sinus Tarsi, Outcomes

11:45-12:00 Midfoot Fractures  
Timing, Approaches, Implants, ORIF vs Fusion, Outcomes

12:00-12:15 Discussion

12:15-12:45 Pick Up Lunch and Exhibits

12:45 -1:15

**KEYNOTE ADDRESS: HOW DOES YOUR LIFE CREATE MEANING?**  
Donald A. Wiss, MD

**SESSION IV: LOWER-EXTREMITY FRACTURES**  
Moderators: Carol Lin, MD and Mark Vrahas, MD

1:15-2:00

**Fracture of the Tibia: Plateau, Shaft and Pilon**

**Daniel Horwitz, MD**

1:15-1:30

Tibial Plateau Fractures  
Timing of Surgery, Imaging, Surgical Approaches, Implants, Outcomes

1:30-1:45

Tibial Shaft Fractures  
Open vs. Closed Fractures, IM Nailing Shaft and Metaphysis, Tips, Outcomes

1:45-2:00

Tibial Pilon Fractures  
Timing, External Fixation, What about Fibula, Surgical Approaches, Outcomes

2:00-2:15

**Discussion**

2:15-3:00

**Fractures of the Hip and Femur**

**Andrew Schmidt, MD**

2:15-2:30

Geriatric Femoral Neck and Intertrochanteric Hip Fractures  
ORIF vs. Arthroplasty, Hemi vs. THR, Surgical Approaches, Cement or Press Fit Sliding Hip Screw vs. Cephalo-Medullary Nails, Short vs. Long, Proximal Fixation

2:30-2:45

Subtrochanteric and Femoral Shaft Fractures  
Fracture vs. Jackson Table, Antegrade vs. Retrograde, Piriformis or Trochanteric

2:45-3:00

Supracondylar Femur Fracture  
IM Nail vs. Locked Plate, MIPPO, Construct Stiffness, Outcomes

3:00-3:15

**Refreshment Break**

**SESSION V: MULTIPLY INJURED PATIENTS, PELVIS AND ACETABULAR FRACTURES**  
Moderator: Charles Moon, MD

3:15-4:00

**Multiply Injured Patient, Pelvis and Acetabular Fractures**

**Steve Morgan, MD**

3:15-3:30

The Multiply Injured Patient  
Principals of Treatment, Shock, Resuscitation, Damage Control

3:30-3:45

Pelvic Fractures  
Classification, Resuscitation, Angiography, Pelvic Packing, Implants, Timing

3:45-4:00

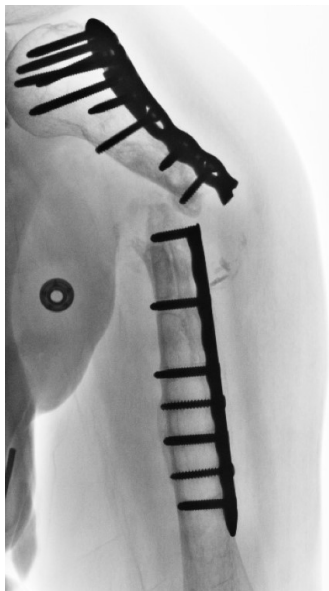
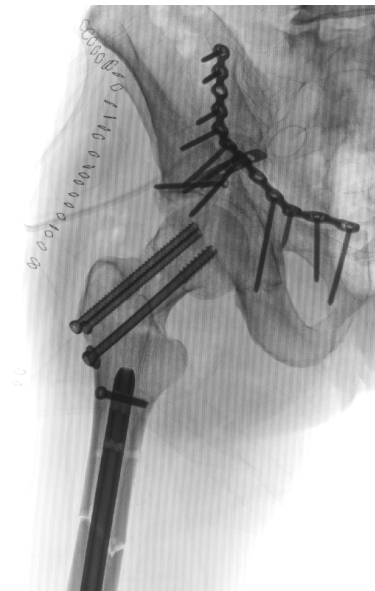
Acetabular Fractures  
Imaging, Classification-Based Treatment, Surgical Approaches, Outcomes

4:00-4:15

**Discussion**

4:15-4:30 P.M.

**Wrap-up and Conclusion**



# REGISTRATION FEES

---

|                 |       |
|-----------------|-------|
| Physician       | \$200 |
| Non Physician   | \$125 |
| Resident/Fellow | \$75  |
| Medical Student | \$50  |

**REGISTER ONLINE TODAY!**

**[cedars.cloud-cme.com/orthotraumacme](https://cedars.cloud-cme.com/orthotraumacme)**

**All registrations must be completed online.** Complete the online registration, continue to the payment section and select “I will mail a separate check for my registration.”

## **MAIL PAYMENT**

(with checks made payable to Cedars-Sinai Medical Center) to:  
Cedars-Sinai Medical Center  
Office of Continuing Medical Education  
Attn: Registration  
8797 Beverly Blvd., Suite 250  
Los Angeles, CA 90048

## **REFUND POLICY**

All cancellations must be submitted in writing, and refunds will be subject to a \$50 administrative charge. No refunds will be given after September 14, 2018. Please email cancellation requests to [cme@cshs.org](mailto:cme@cshs.org). If you do not receive confirmation of your cancellation via email, please call 310-423-5548.



We encourage participation by all individuals. If you have a disability, advance notification of any special needs will help us better serve you.

## ACCREDITATION STATEMENT

Cedars-Sinai Medical Center is accredited by the Accreditation Council for Continuing Medical Education to provide continuing medical education for physicians.



## CREDIT DESIGNATION STATEMENT

Cedars-Sinai Medical Center designates this live activity for a maximum of 8.0 *AMA PRA Category 1 Credits™*. Physicians should claim only the credit commensurate with the extent of their participation in the activity.

## NURSES

The California State Board of Registered Nursing accepts courses approved by the ACCME for Category 1 credit as meeting the educational requirements for license renewal.

## PHYSICAL THERAPIST

Cedars-Sinai Medical Center is an approved provider for the Physical Therapy Board of California. This conference meets the qualifications for 2.0 continuing competency hours.



## POLICY ON DISCLOSURE

It is the policy of Cedars-Sinai Medical Center to ensure balance, independence, objectivity and scientific rigor in all its educational activities. Cedars-Sinai Medical Center assesses conflicts of interest with its faculty, planners and managers of CME activities. Conflicts of interest that are identified are resolved by reviewing that presenter's content for fair balance and absence of bias, scientific objectivity of studies utilized in this activity, and patient care recommendations.

While Cedars-Sinai Medical Center endeavors to review faculty content, it remains the obligation of each physician or other healthcare practitioner to determine the applicability or relevance of the information provided from this course in his or her own practice.

## ACKNOWLEDGMENT OF COMMERCIAL SUPPORT

Commercial support for this conference is pending and will be acknowledged at the conference.



CEDARS-SINAI®

8797 Beverly Blvd., Suite 250  
Los Angeles, CA 90048

NON-PROFIT ORG.  
U.S. POSTAGE  
PAID  
LOS ANGELES, CA  
PERMIT #22328

**REGISTER TODAY!**

# 10th Annual Los Angeles ORTHOPEDIC TRAUMA Symposium “Masters Course”

---

**SATURDAY, SEPTEMBER 29, 2018**

**CONFERENCE LOCATION**

Sofitel Los Angeles at Beverly Hills  
8555 Beverly Blvd.  
Los Angeles, CA 90048

Earn up to 8 *AMA PRA Category 1 Credits™*!

[cedars.cloud-cme.com/orthotraumacme](https://cedars.cloud-cme.com/orthotraumacme)