



CEDARS-SINAI INTERNATIONAL ENDOSCOPY SYMPOSIUM

January 25-28, 2018

2nd
Advanced
Luminal
Endoscopy
Course

1/25/18 FULL DAY
Advanced Luminal Endoscopy
Live procedure demonstrations

2nd
Radiation
Safety
Course

1/26/18 MORNING
Radiation Safety in Digital Fluoroscopy

10th
Workshop
for GI
Fellows &
Nurses

1/26/18 MORNING
GI Fellows & Nurses Hands-on Workshops

25th
Symposium
on Pancreatic
& Biliary
Endoscopy

1/26/18 AFTERNOON TO 1/28/18 MORNING
Pancreatic & Biliary Endoscopy
Live procedure demonstrations

COURSE CO-DIRECTORS

Simon K. Lo, MD • David Carr-Locke, MB, BChir • Nageshwar Reddy, MD

CONFERENCE LOCATION

Cedars-Sinai Medical Center
Harvey Morse Conference Center, Los Angeles



*This course is endorsed by the
American Society for Gastrointestinal Endoscopy*

ACTIVITY INFORMATION

COURSE DESCRIPTION

The Cedars-Sinai *25th International Endoscopy Symposium* will be held in cooperation with multiple major endoscopy centers in North America, Europe and Asia. For the 25th year, this signature course will offer an intensive and comprehensive review of pancreatic and biliary endoscopy for the benefit of gastroenterologists, gastroenterology fellows, and gastroenterology nurses and technicians. This year's program will feature focused educational tracks as well as an optional one-day (Thursday) program in advanced luminal endoscopy and a Friday session/workshops dedicated for fellows, nurses and technicians. The program will include invited expert faculty who will perform multiple live EUS and ERCP procedures to demonstrate techniques and technology for the benefit of participants watching the live feed in the Cedars-Sinai auditorium.

To reinforce skills and obtain more personalized educational content, attendees may participate in hands-on workshops designed for GI fellows and nurses. The optional radiation safety course will provide attendees with four credit hours needed for renewal of their California Fluoroscopy Supervisor's license. In addition to the live procedure video feeds, symposium faculty will present the latest and most relevant information on pancreatic and biliary endoscopy using a variety of traditional formats, including lectures, panel discussions, case review and Q&A. Balanced viewpoints, special techniques and practical clinical approaches will be highlighted throughout the program.

Our renowned international faculty will bring their unique knowledge and excitement to share with you on January 25-28, 2018!

TARGET AUDIENCE

This educational activity will provide an intensive and comprehensive review of pancreatic and biliary endoscopy for gastroenterologists, gastroenterology fellows and gastroenterology nurses, with specific workshops offered for each segment of the target audience.

EDUCATIONAL OBJECTIVES

- Identify areas in patient management where pancreatic and biliary quality indicators should be utilized and determine which evidence-based EUS and ERCP patient safety measures should be implemented.
- Identify the latest updates in the diagnosis and management of patients with pancreaticobiliary diseases.
- Describe the proper indications and use of new ERCP-related technologies and techniques
- Identify methods to detect and assess tumors and cysts of the pancreas and biliary tract, and select the most appropriate endoscopic and treatment modality.
- Enhance knowledge of the pathophysiology, diagnosis and management of digestive diseases for which endoscopic procedures are indicated, and evaluate techniques and technologies currently utilized in the field.
- Explore training, research and career opportunities for interventional fellows with colleagues and expert faculty.
- Discuss current and emerging diagnostic and therapeutic techniques in GI endoscopy and their application in GI nursing.
- Discuss methods to improve ERCP and EUS scope cleanliness to prevent infection outbreaks.
- Apply best practices to minimize patient radiation dose during fluoroscopy and avoid the chance of skin injury during extended fluoroscopic procedures.

ACCREDITATION STATEMENT

Cedars-Sinai Medical Center is accredited by the Accreditation Council for Continuing Medical Education to provide continuing medical education for physicians.



CREDIT DESIGNATION STATEMENT

Cedars-Sinai Medical Center designates this live activity for a maximum of 35.25 *AMA PRA Category 1 Credits™*. Physicians should claim only the credit commensurate with the extent of their participation in the activity.

RADIOLOGY AND FLUOROSCOPY

11.0 credits of the course (specific to ERCP demonstrations) may meet requirements in the state of California toward renewal of the radiology and fluoroscopy supervisor's license.

CONTINUING NURSING EDUCATION

The California State Board of Registered Nursing accepts courses approved by the ACCME for Category 1 credit as meeting the continuing education requirements for license renewal.

ACKNOWLEDGMENT OF COMMERCIAL SUPPORT

Commercial support for this course is pending and will be disclosed at the symposium.

FACULTY

COURSE CO-DIRECTORS

David Carr-Locke, MB, BChir, DRCOG, FRCP, FACP, FRCG
Clinical Director, The Center for Advanced Digestive Care
New York Presbyterian Hospital
Weill Cornell Medicine
New York, NY

Simon K. Lo, MD, FACP, FRCG
F. Widjaja Family Chair in Digestive Diseases
Director, Endoscopy Service
Director, Pancreatic and Biliary Diseases Program
Division of Digestive and Liver Diseases
Cedars-Sinai

Nageshwar Reddy, MD
Chief of Gastroenterology & Therapeutic Endoscopy
Asian Institute of Gastroenterology
Hyderabad, India

FELLOWS COURSE CHAIR

Laith H. Jamil, MD
Associate Director, Interventional Endoscopy Service
Division of Digestive and Liver Diseases
Cedars-Sinai

CO-DIRECTOR, RADIATION SAFETY COURSE

Yifang (Jimmy) Zhou, PhD
Medical Physicist
Radiation and Environmental Safety
Cedars-Sinai

WORKSHOP PROGRAM COORDINATOR

Helena Spivak, RN, CGRN
CN III, Gastroenterology
Cedars-Sinai

NURSE COORDINATORS

Shara Chess, RN
Associate Director of GI Laboratory
Cedars-Sinai

Rose Chang, RN, CGRN
GI Endoscopy Nurse
Cedars-Sinai

Yvonne Y. Min, RN, CGRN
GI Endoscopy Nurse
Cedars-Sinai

Loretta Y. So, RN, BSN, CGRN
Interventional Endoscopy
Cedars-Sinai

GUEST PROCEDURE FACULTY

Todd Baron, MD
Director of Advanced Therapeutic Endoscopy
UNC Chapel Hill School of Medicine
Department of Medicine
Division of Gastroenterology and Hepatology
Chapel Hill, NC

Kenneth Binmoeller, MD
Medical Director
Interventional Endoscopy Service (IES)
California Pacific Medical Center
San Francisco, CA

David T. Rubin, MD
Joseph B. Kirsner Professor of Medicine
Section Chief, Gastroenterology, Hepatology and Nutrition
Co-Director, Digestive Diseases Center
The University of Chicago Medicine
Chicago, IL

Dong Wan Seo, MD, PhD
Professor of Department of Gastroenterology
University of Ulsan College of Medicine
Asan Medical Center
South Korea

Raj J. Shah, MD
Associate Professor of Medicine
Director of Pancreaticobiliary Endoscopy
University of Colorado School of Medicine
Anschutz Medical Campus
Division of Gastroenterology
Aurora, CO

Christopher C. Thompson, MD, MHES
Assistant Professor
Harvard Medical School
Director of Therapeutic Endoscopy
Brigham and Women's Hospital
Boston, MA

Ping-Hong Zhou, MD, PhD
Director of Endoscopy, Zhongshan Hospital
Associate Professor, Fudan University, Shanghai
People's Republic of China

FACULTY

GUEST FACULTY

Gebran Abboud, MD

Gastroenterologist
Conemaugh Memorial Medical Center
Johnstown, PA

Murad A. Abu-Rajab, MD

Assistant Professor of Medicine
Medical College of Wisconsin
Milwaukee, WI

Sami A. Almaskeen, MD

Advanced Therapeutic Endoscopist
VA St. Louis Health Care System
St. Louis, MO

Juan C. Bucobo, MD

Assistant Professor
Gastroenterology and Hepatology
Stony Brook SUNY
East Setauket, NY

Brian Boulay, MD

Professor of Medicine
Division of Gastroenterology and Hepatology
Department of Medicine
University of Illinois
College of Medicine at Chicago
Chicago, IL

Christopher Hammerle, MD

Gastroenterologist
Idaho Gastroenterology Associates
Boise, ID

Vijay Jayaraman, MD

Gastroenterologist
Comprehensive Digestive Institute of Nevada
Las Vegas, NV

Atul Khanna, MD

Gastroenterologist
Charlotte Gastroenterology & Hepatology
Charlotte, NC

Rizwan Kibria, MD

Gastroenterology Hospitalist
Good Samaritan Hospital
Beavercreek, OH

Richard A. Kozarek, MD

Virginia Mason Medical Center
Gastroenterology Service
Section of Therapeutic Endoscopy
Seattle, WA

Joshua B. Max, MD

Gastroenterologist
TriHealth Digestive Institute
Cincinnati, OH

Navin Paul, MD

Gastroenterologist
Sanford Medical Center Fargo
Fargo, ND

Michael E. Schafer, MD

Gastroenterologist
Midwest Gastrointestinal Associates
Omaha, NE

Mel A. Ona, MD

Gastroenterologist
Los Angeles, CA

James Sul, MD

Gastroenterology
Saint John's Health Center
Santa Monica, CA

CEDARS-SINAI**AND SOUTHERN CALIFORNIA FACULTY**

Janet Z. Allahverdian, MHP

Medical Physicist
Environmental Health and Safety
Cedars-Sinai

Binesh Batra, MD, FACG

Medical Director/Chief of Staff Kaiser Permanente
Downey, CA

Miguel Burch, MD

Assistant Clinical Professor, Cardiac Non-Invasive
Laboratory
Associate Director, Minimally Invasive Surgery
Cedars-Sinai

James L. Buxbaum, MD

Assistant Professor of Clinical Medicine
Keck Hospital at USC
Los Angeles, CA

Jerome D. Cohen, MD

Assistant Clinical Professor of Medicine
David Geffen School of Medicine at UCLA
Medical Director
Endoscopy Center of the South Bay
Torrance, CA

Stanley K. Dea, MD

Associate Clinical Professor of Medicine
David Geffen School of Medicine at UCLA
Director of Endoscopy
Olive-View UCLA Medical Center
Sylmar, CA

Donna Earley, MS

Director, Environmental Health and Safety
Cedars-Sinai

Viktor E. Eysselein, MD

Professor of Medicine
David Geffen School of Medicine at UCLA
Chief, Gastroenterology
Harbor-UCLA Medical Center
Torrance, CA

Srinivas Gaddam, MD

Assistant Professor, Medicine
Division of Digestive and Liver Diseases
Cedars-Sinai

Sofiya Gukovsky-Reicher, MD

Director of Endoscopy
Harbor-UCLA Medical Center
Associate Professor
David Geffen School of Medicine at UCLA
Los Angeles, CA

Karl K. Kwok, MD

Southern California Permanente Medical Group
Center for Pancreatic Care
Kaiser Permanente Los Angeles Medical Center
Los Angeles, CA

Shelly Lu, MD

Director, Division of Digestive and Liver Diseases
Cedars-Sinai

Quin Y. Liu, MD

Interventional Gastroenterology
Division of Digestive and Liver Diseases
Cedars-Sinai

Gil Y. Melmed, MD, MS

Director, Clinical Inflammatory Bowel Disease
Director, Advanced Inflammatory Bowel Disease
Fellowship Program
Director, Clinical Research
Division of Digestive and Liver Diseases
Cedars-Sinai

Charles Menz, MD

Director, GI Laboratory
Community Memorial Hospital
Ventura, CA

Nicholas N. Nissen, MD

Director, Hepatobiliary and Pancreatic Surgery
Liver Transplant Center
Cedars-Sinai

Kenneth H. Park, MD

Interventional Gastroenterology Fellow
Division of Digestive and Liver Diseases
Cedars-Sinai

Shirley C. Paski, MD

Gastroenterology
Division of Digestive and Liver Diseases
Cedars-Sinai

John L. Petrini, MD

Clinical Associate Professor of Medicine
Keck School of Medicine at USC
Chief of Gastroenterology
Sansum Medical Clinic
Santa Barbara, CA

Mark Pimentel, MD, FRCPC

Program Director, Medically Associated Science
and Technology (MAST) Program
Associate Professor, Medicine
Associate Professor, Gastroenterology
Division of Digestive and Liver Diseases
Cedars-Sinai

Harmik J. Soukiasian, MD

Director, Division of Thoracic Surgery
Associate Director, Cardiothoracic Surgery
Residency Program
Cedars-Sinai

Theodore Stein, MD

President, Cedars-Sinai Medical Group
Director, Cedars-Sinai Endoscopy
Cedars-Sinai

Jacques Van Dam, MD, PhD

Director of Clinical Gastroenterology
Professor of Medicine
Keck School of Medicine at USC
Los Angeles, CA



THURSDAY, JANUARY 25, 2018

2ND LIVE COURSE IN ADVANCED LUMINAL ENDOSCOPY

Location: HMA

7:00 A.M. Registration

8:00 Welcome

David Carr-Locke, MB, BChir; Shelly Lu, MD

ENDOSCOPIC MYOTOMY

Moderators: Todd Baron, MD; Michael Schafer, MD

8:10 POEM for achalasia: A clinical update

Ping-Hong Zhou, MD

8:30 Myotomy for other GI indications

David Carr-Locke, MB, BChir

BARIATRIC ENDOSCOPY

Moderators: Todd Baron, MD; Michael Schafer, MD

8:50 Gastric balloons

TBA

9:05 Bariatric endoscopic possibilities using sutures, magnets and staples

Christopher Thompson, MD

9:25 Panel discussion

Ping-Hong Zhou, MD; Christopher Thompson, MD; Harmik Soukiasian, MD; Miguel Burch, MD; David Carr-Locke, MB, BChir; Richard Kozarek, MD; Mark Pimentel, MD

9:50 Break

ENDOSCOPY IN IBD

Moderators: Richard Kozarek, MD; Shirley Paski, MD

10:00 Dysplasia in IBD: Surveillance and management

David Rubin, MD

10:30 The role of endoscopy in post-op evaluation and treatment of IBD

Gil Melmed, MD

ENDOSCOPY DEMONSTRATIONS

10:50 Live endoscopy transmission from the CSMC GI Unit

Moderators: Richard Kozarek, MD; Shirley Paski, MD

12:30 P.M. Box lunch

1:10 Live endoscopy transmission from the CSMC GI Unit

Moderators: Brian Boulay, MD; Juan Bucobo, MD

3:00 Break

COLONIC POLYPS

Moderators: Raj Shah, MD; Dong Wan Seo, MD, PhD

3:15 Endoscopic assessment and classifications of colorectal polyps

Laith Jamil, MD

3:35 Endoscopic management of advanced polyps

Kenneth Binmoeller, MD

GI TRACT OBSTRUCTION

Moderators: Raj Shah, MD; Dong Wan Seo, MD, PhD

3:55 Gastric outlet obstruction: Alternatives to stenting

Todd Baron, MD

4:15 Luminal stenting

Richard Kozarek, MD

LEARNING FROM THE EXPERTS

4:35 Breakout session I

5:15 Breakout session II

CHOOSE 2 SESSIONS FROM THE FOLLOWING TOPICS:

A Small bowel Crohn's disease

David Rubin, MD; Gil Melmed, MD

B Mucosal defects and perforation

Todd Baron, MD; Rizwan Kibria, MD

C Conditions of the submucosa and smooth muscle

Ping-Hong Zhou, MD; Vijay Jayaraman, MD

D Bariatric complications

Christopher Thompson, MD; Christopher Hammerle, MD

5:55 P.M. Meeting adjourns

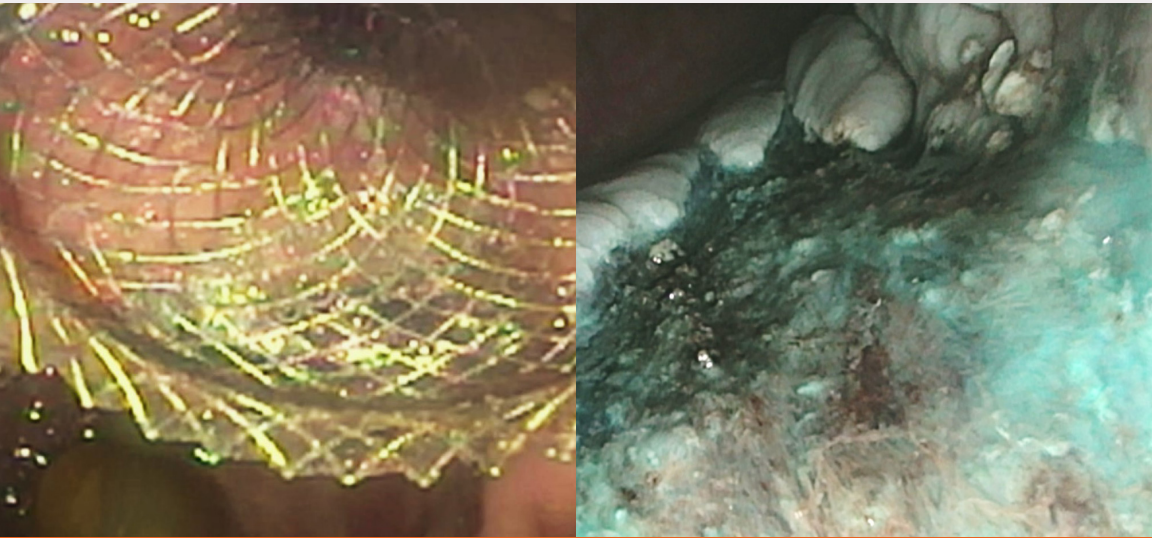
OPTIONAL 2ND RADIATION SAFETY IN DIGITAL FLUOROSCOPY FOR GASTROENTEROLOGY

Location: PEC

Moderators: Yifang (Jimmy) Zhou, PhD; Charles Menz, MD

Program designed by and in cooperation with the Radiation Safety Program and Diagnostic Medical Physics Group at Cedars-Sinai Medical Center. Completion of the entire program satisfies new California requirements for earning four of 10 CE credits every two years to support the safe and effective clinical uses of fluoroscopy.

7:00 A.M.	Registration	
7:45	Radiation safety in digital fluoroscopy: Risks, benefits and perspectives	Donna Earley, MS
8:45	Radiation safety in digital fluoroscopy: Instrumentation and operation	Yifang (Jimmy) Zhou, PhD
9:45	Radiation safety in digital fluoroscopy – Mobile fluoroscopy	Janet Allahverdian, MHP
10:45	Boxed Lunch	
11:00	Radiation Safety in Interventional Endoscopic Procedures	Karl Kwok, MD; Sofiya Gukovsky-Reicher, MD
11:45 A.M.	Radiation Safety Program Adjourns	



10TH WORKSHOP FOR GI FELLOWS, NURSES & TECHNICIANS

Location: HMA

Moderators: Joshua Max, MD; Mel Ona, MD

7:00 A.M.	Registration	
7:15	Biliary anatomy	Stanley Dea, MD
7:35	Pancreatic anatomy	Srinivas Gaddam, MD
7:50	ERCP cannulation: Instruments and techniques	Juan Bucobo, MD
8:05	Basic ERCP interpretation	Karl Kwok, MD
8:15	Introduction to EUS	Jacques Van Dam, MD, PhD
8:40	Basic EUS images that every fellow should know	Sofiya Gukovsky-Reicher, MD
9:00	Sphincterotomy and stone extraction	James Buxbaum, MD
9:20	Biliary and pancreatic stenting	Brian Boulay, MD
9:35	Break	

WORKSHOP AND DEMONSTRATIONS

Faculty: TBD

9:50	Separate fellows and nurses workshops	
11:50	SEPARATE FELLOWS AND NURSES LUNCH LECTURES	
	Location: PEC	
12:45 P.M.	Session adjourns	

CELEBRATING 25 YEARS OF THE SYMPOSIUM!



FRIDAY, JANUARY 26, 2018

25TH INTERNATIONAL SYMPOSIUM ON PANCREATIC & BILIARY ENDOSCOPY

Location: HMA

12:30 P.M. Registration

1:00 Welcome

PANCREATIC & BILIARY STRICTURES

Moderators: Jacques Van Dam, MD, PhD; Dong Wan Seo, MD, PhD

1:15 When and how to use the diagnostic tools for biliary and pancreatic strictures *David Carr-Locke, MB, BChir*

1:35 The changing practice in managing biliary hilar strictures *Richard Kozarek, MD*

1:55 PSC: When and what to do *Todd Baron, MD*

ERCP RELATED COMPLICATIONS

Moderators: Jacques Van Dam, MD, PhD; Dong Wan Seo, MD, PhD

2:15 The latest on prevention and management of ERCP-related pancreatitis *Raj Shah, MD*

2:35 How to manage ERCP-related perforation and other complications *Christopher Thompson, MD*

2:55 Break

LIVE PROCEDURE DEMONSTRATIONS

Moderators: Richard Kozarek, MD; Theodore Stein, MD; Jerome Cohen, MD; Murad Abu-Rajab, MD

Presenters: Todd Baron, MD; Kenneth Binmoeller, MD; David Carr-Locke, MB, BChir; Dong Wan Seo, MD; Raj Shah, MD; Christopher Thompson, MD

3:05 Procedures

5:30 P.M. Meeting adjourns



SATURDAY, JANUARY 27, 2018

7:00 A.M. Registration

VIDEO FORUM

Moderators: Sami Almaskeen, MD; Atul Khanna, MD

7:30 Short video presentations

TWENTY-FIVE YEARS IN REVIEW

Moderators: Jerome Cohen, MD; Binesh Batra, MD

8:00 The past 25 years of biliary endoscopy: Then and now *David Carr-Locke, MB, BChir*
8:25 Endoscopic treatment of chronic pancreatitis: 25 years of experience *Nageshwar Reddy, MD*
8:50 Live transmission from Hyderabad *Nageshwar Reddy, MD*
9:30 Break

LIVE PROCEDURE DEMONSTRATIONS

Moderators: Jacques Van Dam, MD, PhD; Viktor Eysselein, MD; John Petrini, MD; James Buxbaum, MD
Presenters: Todd Baron, MD; Kenneth Binmoeller, MD; David Carr-Locke, MB, BChir; Dong Wan Seo, MD; Raj Shah, MD; Christopher Thompson, MD

9:45 Live demonstrations

12:00 P.M. Lunch

THE GREAT DEBATE IN PANCREATICOBILIARY INTERVENTIONS

Moderator: Richard Kozarek, MD; TBD

1:00 **Topics:** EUS biliary and pancreatic access: Management of pseudocyst and necrosis
Debaters: *Todd Baron, MD; Kenneth Binmoeller, MD; Nicholas Nissen, MD*

LIVE PROCEDURE DEMONSTRATIONS

Moderator: Viktor Eysselein, MD; Richard Kozarek, MD; Karl Kwok, MD; James Sul, MD

2:00 Live demonstrations *Todd Baron, MD; Kenneth Binmoeller, MD; David Carr-Locke, MB, BChir; Dong Wan Seo, MD; Raj Shah, MD; Christopher Thompson, MD*

5:30 P.M. Meeting adjourns

SUNDAY, JANUARY 28, 2018

7:00 A.M. Registration

VIDEO FORUM

Moderators: Sami Almaskeen, MD; Atul Khanna, MD

7:30 Short video presentations

CASE-BASED LEARNING IN PANCREATICOBILIARY DISEASE MANAGEMENT

8:00 Case presentations and discussions
Moderators: Binesh Batra, MD; Jerome Cohen, MD
Presenters: Kenneth Park, MD; Quin Liu, MD; Sofiya Gukovsky-Reicher, MD

10:00 Break

EUS-GUIDED PANCREATIC THERAPY

Moderators: Srinivas Gaddam, MD; Quin Liu, MD

10:15 EUS pancreatic cyst ablation: Indications, techniques and complications *Dong Wan Seo, MD*
10:35 Is it time yet for endoscopic ablation of solid tumors? *Dong Wan Seo, MD*
10:55 When and how to deal with cysts and benign tumors: A surgeon's perspective *Nicholas Nissen, MD*

LEARNING FROM EXPERIENCE

Moderators: Srinivas Gaddam, MD; Quin Liu, MD

11:15 My worst nightmare I *Richard Kozarek, MD*
11:30 My worst nightmare II *Christopher Thompson, MD*

SYMPOSIUM LIVE CASES FOLLOW-UP

11:45 Case presentations
Presenter: Kenneth Park, MD
Discussants: David Carr-Locke, MB, BChir; Simon Lo, MD

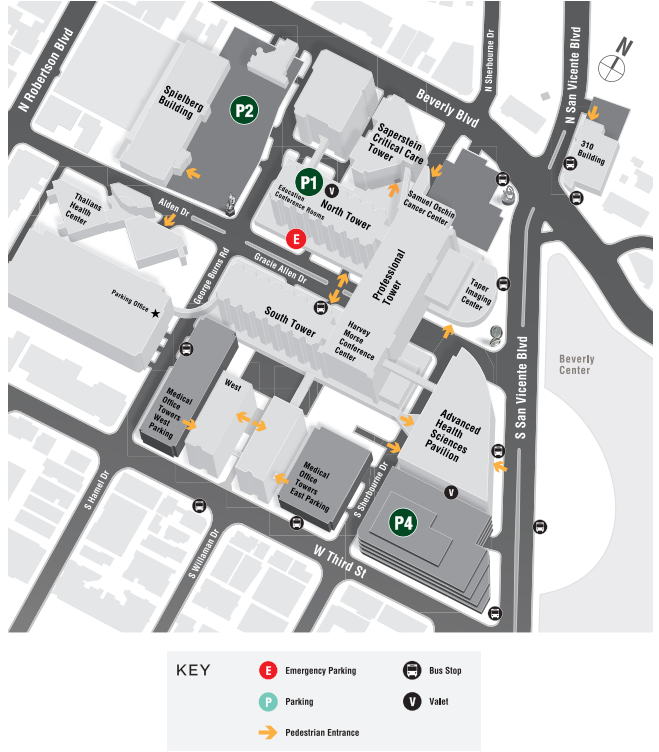
12:15 P.M. Symposium adjourns

CONFERENCE LOCATION

Cedars-Sinai Medical Center
 Harvey Morse Auditorium
 8701 Gracie Allen Drive,
 Plaza Level, South Tower
 Los Angeles, CA 90048
 310-423-5548

The Harvey Morse Auditorium is located on the plaza level, South Tower of the Medical Center. A short 15-mile taxi ride from LAX will bring you to the medical center or the Sofitel.

PARKING AT CEDARS-SINAI
 Self-parking is available in CSMC Visitor lots (P1, P2, etc).



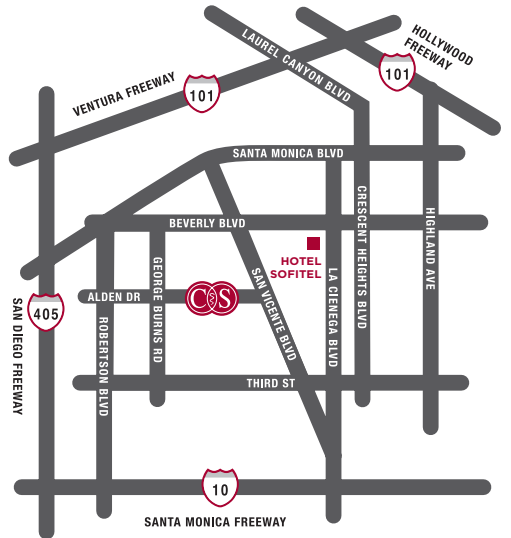
HOTEL INFORMATION

Sofitel Los Angeles
 8555 Beverly Blvd.
 Los Angeles, CA 90048
 310-278-5444

Cedars-Sinai has arranged for a block of rooms at the Sofitel Los Angeles, at special conference rates:

ROOM TYPE	ROOM RATE/NIGHT
Superior King	\$279 + Tax
Superior Double	\$299 + Tax
Luxury King	\$299 + Tax

The room block and special rates are available until Thursday, Jan. 11, 2018, at which time the conference rate can no longer be guaranteed. There are instances where the room block sells out prior to the cutoff date, so please register for the conference and make your hotel reservations early. To make reservations, please call 310-278-5444. Be sure to tell the reservation agent that you are attending the Cedars-Sinai Endoscopy Symposium to guarantee the special rate.



REGISTRATION

REGISTER ONLINE TODAY!

cedars-sinai.edu/pancreaticbiliarycme

ALL REGISTRATIONS MUST BE COMPLETED ONLINE.

For additional course or registration information, call 310-423-5548.

Registration Fees

RECEIVED BY 1/5/2018

Physician Options:

FULL CONFERENCE (PLUS Friday morning Radiation Safety program): **\$749.00**

FULL CONFERENCE (EXCLUDES Friday morning Radiation Safety program): **\$695.00**

THURSDAY ONLY: **\$125.00**

Non-physician Options:

FULL CONFERENCE: **\$475.00**

THURSDAY ONLY: **\$125.00**

Resident/Fellow Options:

FULL CONFERENCE: **\$475.00**

THURSDAY ONLY: **\$125.00**

RECEIVED AFTER 1/5/2018

Physician Options:

FULL CONFERENCE (PLUS Friday morning Radiation Safety program): **\$880.00**

FULL CONFERENCE (EXCLUDES Friday morning Radiation Safety program): **\$795.00**

THURSDAY ONLY: **\$125.00**

Non-physician Options:

FULL CONFERENCE: **\$575.00**

THURSDAY ONLY: **\$125.00**

Resident/Fellow Options:

FULL CONFERENCE: **\$575.00**

THURSDAY ONLY: **\$125.00**

NOTE: *A limited number of GI fellows with a recommendation from their program director may be eligible to receive a modest travel stipend. Please email requests to cme@cshs.org, attention Ani Mardakhanian.*

TO PAY BY CHECK

Complete the online registration, continue to the payment section and select "I will mail a separate check for my registration."

MAIL PAYMENT (with checks made payable to Cedars-Sinai Medical Center) to:

Cedars-Sinai Medical Center

Office of Continuing Medical Education, Attn: Registrations

8797 Beverly Blvd., 250, Los Angeles, CA 90048

Check payment must be received two weeks before the course or your registration may be canceled.

CANCELLATION AND REFUND POLICY

Cedars-Sinai reserves the right to cancel or reschedule programs due to circumstances beyond its control, or close registration when programs are oversubscribed. Registrants are advised against purchasing nonrefundable airline tickets until they receive confirmation from the CSMC Office of CME. Cedars-Sinai is not responsible for penalties incurred as a result of canceled transportation fees. Written requests for cancellation must be sent to cme@cshs.org and should be received by Friday, Jan. 12, 2018. A partial refund, less a \$100 handling fee, will be issued following the meeting. After Jan. 12, 2018, no refunds will be given.



We encourage participation by all individuals. If you have a disability, advance notification of any special needs will help us better serve you.



CEDARS-SINAI®

8797 Beverly Blvd., Suite 250
Los Angeles, CA 90048

NON-PROFIT ORG.
U.S. POSTAGE
PAID
Los Angeles, CA
Permit #22328

REGISTER TODAY!

CEDARS-SINAI INTERNATIONAL ENDOSCOPY SYMPOSIUM

January 25-28, 2018

PROGRAM FEATURES

- Live ERCP/EUS Procedure Broadcasts
- Advanced Luminal Endoscopy Session
- Radiation Safety in Digital Fluoroscopy
- Fellows and Nursing Lectures
- Didactic Lectures
- Case Discussions
- Literature Review

Earn up to **35.25 AMA PRA Category I Credits™**