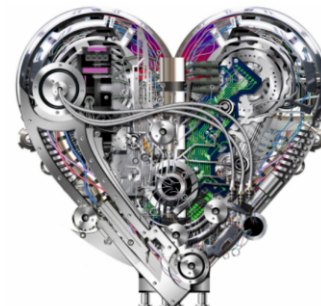


Exhibitor Prospectus

IN-PERSON ACTIVITY

**Practicum in Mechanical Circulatory Support (MCS):
Managing Cardiogenic Shock with
Short-Term Devices**



October 22, 2022

Cedars-Sinai Medical Center

<https://cedars.cloud-cme.com/mcscme>

Participate as an Exhibitor – Live In-Person

Cedars-Sinai invites your company to participate as an Exhibitor at the continuing medical education activity entitled, **The Practicum in Mechanical Circulatory Support (MCS): Managing Cardiogenic Shock with Short-Term Devices** being held on October 22, 2022, at Cedars-Sinai Medical Center.

This course will provide a concise review of clinical knowledge and essential professional skills to facilitate the surgical and medical management of patients with advanced heart failure who are being assessed for and who have received mechanical circulatory support. Presentations will focus on covering a broad array of topics for patient management in an acute setting with an emphasis on a practical approach to patient care, implementing best practices and clinical problem solving. Attendees will participate in interactive case studies and may select one of three wet labs in the afternoon. All participating practitioners will benefit from an understanding of the unique challenges in this patient population.

For more info on the exhibit opportunities, please review this document. Exhibitors must register online and complete the Exhibit registration information, payment, and comply to policies pertaining to the ACCME Standards for Commercial Support.


To register as an exhibitor:

1. Go to: <https://cedars.cloud-cme.com/mcscme>
2. Click on Exhibit at this Event and complete the information required.

Our non-profit tax I.D. number is: 95-1644600. A copy of our W9 can be provided for your records.

IN-PERSON ACTIVITY

**Practicum in Mechanical Circulatory Support (MCS):
Managing Cardiogenic Shock with Short-Term Devices**



Gold Level: Live Exhibit Session and Company Profile Card

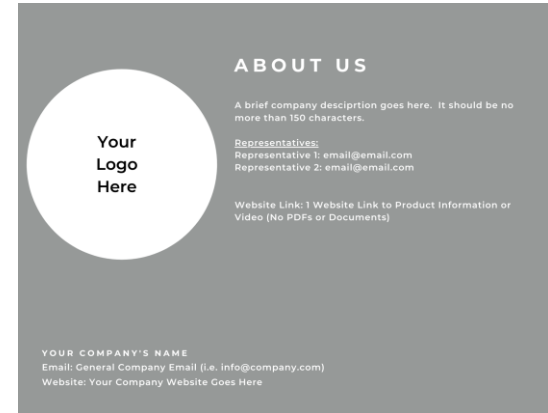
Fee: \$2,500.00

Live Exhibit Sessions

- In-Person exhibit sessions at the Medical Center
- Ample opportunities to meet with Conference attendees:
7:30am - 8:00am; 9:45am - 10:00am; 12:15pm - 1:15pm(lunch period); 2:40pm - 3:00pm
- One (1) display table in the Exhibit space
 - Two (2) Staff Representative attendance – Complimentary

Company Profile Card on our Sponsors/Exhibitors page

- Profile Card includes:
 - Company Name
 - Company Logo
 - Company Website
 - Name of 2 Company Representatives and Email Info
 - 1 Website Link to Product Information or Video
(No PDFs or Documents)
 - [Click here](#) to view an example



Want to Exhibit?



Register Online

To register as an exhibitor: <https://cedars.cloud-cme.com/mcscme>
Click the “Exhibitor” tab, select “Exhibit at this Event”



Payment

Pay by credit card or check.
Checks should be made payable to CSMC and mailed to Cedars-Sinai, Office of Continuing Medical Education, 8700 Beverly Blvd, CME, Los Angeles, CA 90048. Checks must be received at least 2 weeks prior to the activity.



Exhibitor Info/Set-up

Additional set-up info can be found in your registration confirmation and follow-up emails closer to the event date.

Cedars-Sinai Exhibiting Policy



All companies permitted by Cedars-Sinai Office of CME to complement the conference must strictly adhere to the following guidelines regarding their participation as an exhibitor:



When commercial exhibits are part of the program, arrangements for these shall not influence planning or interfere with the presentation of CME activities;



Exhibit placement shall not be a condition of support for a CME activity;



No commercial promotional materials shall be promoted during an educational activity certified for credit; and,



Representatives of commercial supporters may attend an educational activity but may not engage in sales activities while in the virtual room where the activity takes place and are strictly prohibited from the sale of and/or discussion of products while attending the educational activity.



In accordance with OPEN PAYMENTS (Physician Payments Sunshine Act), if exhibitors plan to provide anything of value to physicians, it is the responsibility of your organization to maintain your own record of who accepted these items.

Any Questions?



**Cedars-Sinai
Office of CME**

**700 North San Vicente Blvd, Ste G550
West Hollywood, 90069**

Phone: 310-423-5548

Email: cme@cshs.org