

**The 14th Annual Symposium on Neurovascular Disease:  
Complex Neurovascular Challenges**

**IN-PERSON ACTIVITY**

**Annual Symposium on  
Neurovascular Disease**



**Saturday, January 28, 2023 – Casa Del Mar, Santa Monica**

<https://cedars.cloud-cme.com/neurovascularcme>

# Participate as an Exhibitor

Cedars-Sinai invites your company to participate as an Exhibitor at **The 14th Annual Symposium on Neurovascular Disease: Complex Neurovascular Challenges, January 28, 2023.**

This course will provide attendees with emerging treatments, including disparities in stroke care, telemedicine and updates on stroke trials as a means of expediting the care of stroke patients. A special session dedicated to cerebral aneurysms and AVMs will be offered, which will provide a broad range of updates addressing Takotsubo and heart failure with intracranial hemorrhage, managing pediatric cerebrovascular disease, and radiosurgery for cerebral and spinal AVMs. The final session will offer case-based presentations exploring neurovascular problems, including moyamoya, vasculitis, RCVS, occult causes of stroke and complex case studies.

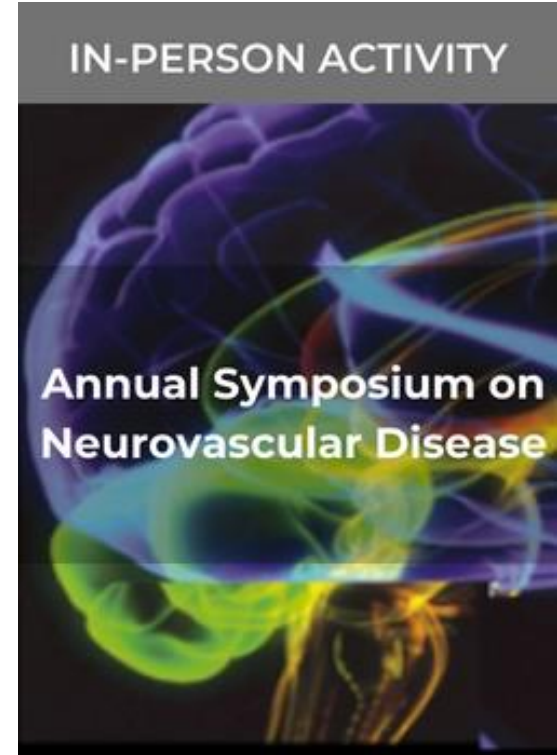
An expert faculty has been assembled to discuss these important topics and the strategies to support healthcare professionals in delivering optimal care to their patients with neurovascular disease.

For more info on the exhibit opportunities, please review this document. Exhibitors must register online and complete the Exhibit registration information, payment, and comply to policies pertaining to the ACCME Standards for Commercial Support.

To register as an exhibitor:

1. Go to: <https://cedars.cloud-cme.com/neurovascularcme>
2. Click on Exhibit at this Event and complete the information required.

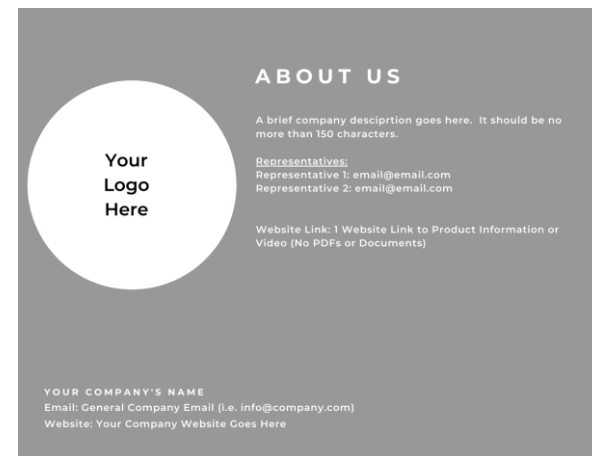
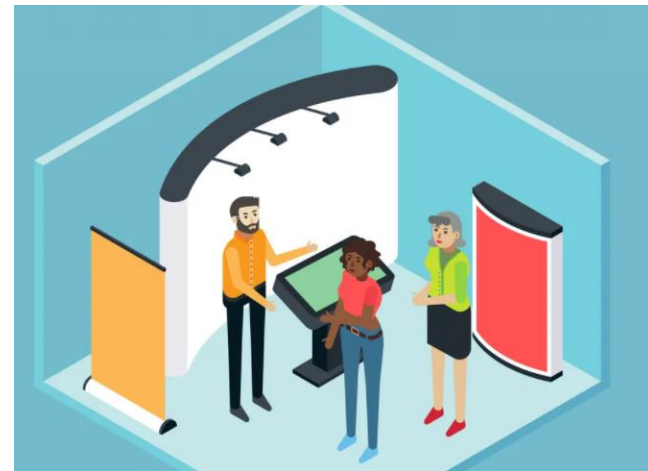
Our non-profit tax I.D. number is: 95-1644600. A copy of our W9 can be provided for your records.



# Gold Level Fee: \$2,750.00:

## Exhibit Table and Company Profile Card

- **Exhibit Display setup includes**
  - One (1) Assigned display table in the Exhibit space
  - Two (2) Staff Representative attendance – Complimentary Registration – only 2 staff are allowed at the table
- **Company Profile Card on our Sponsors/Exhibitors page**
  - Profile Card includes:
    - Company Name and Company Logo
    - Company Description
    - Company Website
    - Name of 2 Company Representatives and Email Info
    - 1 Website Link to Product Information or Video (No PDFs or Documents)



# Want to Exhibit?



## Register Online

To register as an exhibitor: <https://cedars.cloud-cme.com/neurovascularcme>

Click the “Exhibitor” tab, select “Exhibit at this Event”



## Payment

Pay by credit card or check.

Checks should be made payable to CSMC and mailed to Cedars-Sinai Office of Continuing Medical Education, 8700 Beverly Blvd, Office of CME, Los Angeles, CA 90048. Checks must be received at least 2 weeks prior to the activity.



## Exhibitor Info/Set-up

Additional set-up info can be found in your registration confirmation and follow-up emails closer to the event date.

# Cedars-Sinai Exhibiting Policy



All companies permitted by Cedars-Sinai Office of CME to complement the conference must strictly adhere to the following guidelines regarding their participation as an exhibitor:



When commercial exhibits are part of the program, arrangements for these shall not influence planning or interfere with the presentation of CME activities;



Exhibit placement shall not be a condition of support for a CME activity;



No commercial promotional materials shall be promoted during an educational activity certified for credit; and,



Representatives of commercial supporters may attend an educational activity but may not engage in sales activities while in the virtual room where the activity takes place and are strictly prohibited from the sale of and/or discussion of products while attending the educational activity.



In accordance with OPEN PAYMENTS (Physician Payments Sunshine Act), if exhibitors plan to provide anything of value to physicians, it is the responsibility of your organization to maintain your own record of who accepted these items.

# Any Questions?



**Cedars-Sinai  
Office of CME**

**700 North San Vicente Blvd, Ste G550  
West Hollywood, 90069**

**Phone: 310-423-5548**

**Email: [cme@csbs.org](mailto:cme@csbs.org)**