

# Exhibitor Prospectus

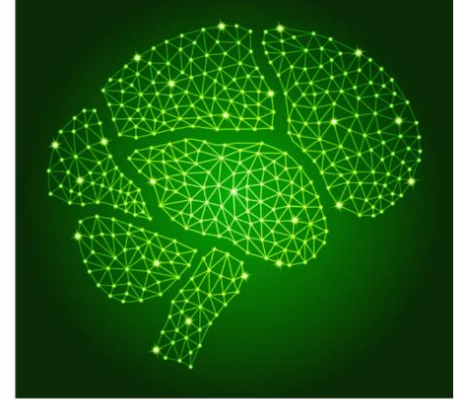
## 4<sup>th</sup> Annual Cedars-Sinai Intracranial Hypotension Symposium



### Intracranial Hypotension Conference

October 2, 2021

<https://cedars.cloud-cme.com/spinalleakcme>



# Participate as an Exhibitor

Cedars-Sinai invites your company to participate as an Exhibitor at the continuing medical education activity entitled **4<sup>th</sup> Annual Cedars-Sinai Intracranial Hypotension Symposium**, scheduled for October 2, 2021. A complete agenda with faculty noted will be available soon on our conference website.

This full-day multidisciplinary activity on the topic of Spontaneous Intracranial Hypotension (SIH), secondary to spinal cerebrospinal fluid (CSF) leak, brings together clinicians and researchers to share the latest advances in the diagnostic evaluation and treatment of this under-diagnosed, disabling but treatable secondary headache disorder. While the course is designed for clinicians and researchers, patients and caregivers are welcome to attend either in-person or via live-streaming. There is an urgent need to improve access to appropriate diagnostics and treatments to reduce the burden of suffering for intracranial hypotension patients. This educational activity is designed to meet the needs of neurologists, neurosurgeons, anesthesiologists, neuroradiologists, pain management physicians, and other clinicians who treat patients with this diagnosis.

For more info on the exhibit opportunities, please review this document. Exhibitors must register online and complete the Exhibit registration information, payment, and comply to policies pertaining to the ACCME Standards for Commercial Support.

To register as an exhibitor:

1. Go to: <https://cedars.cloud-cme.com/spinalleakcme>
2. Click on “Exhibit at this Event” and complete the information required.

Our non-profit tax I.D. number is: 95-1644600. A copy of our W9 can be provided for your records.



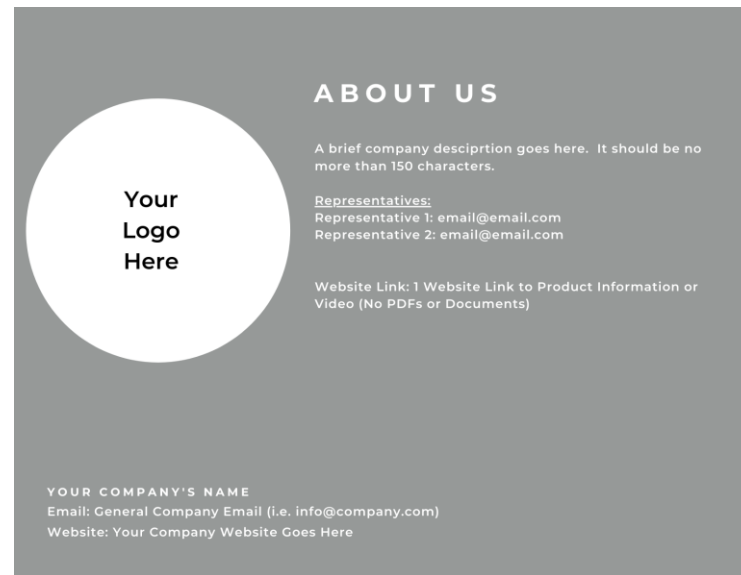
# Silver Level: Company Profile Card

## Fee: \$1,000

### Company Profile Card on our Sponsors/Exhibitors page

- Profile Card includes:
  - Company Name
  - Company Logo
  - Company Website
  - Name of 2 Company Representatives and Email Info
  - 1 Website Link to Product Information or Video (No PDFs or Documents)

[Click here to view an example](#)



# Want to Exhibit?



## Register Online

To register as an exhibitor: <https://cedars.cloud-cme.com/spinalleakcme>  
Click the “Exhibitor” tab, select “Exhibit at this Event”



## Payment

Pay by credit card or check.

Checks should be made payable to CSMC and mailed to Cedars-Sinai Office of Continuing Medical Education, 8700 Beverly Blvd, Los Angeles, CA 90048. Checks must be received at least 2 weeks prior to the activity.



## Exhibitor Info/Set-up

Additional set-up info can be found in your registration confirmation and follow-up emails closer to the event date.

# Cedars-Sinai Exhibiting Policy



All companies permitted by Cedars-Sinai Office of CME to complement the conference must strictly adhere to the following guidelines regarding their participation as an exhibitor:



When commercial exhibits are part of the program, arrangements for these shall not influence planning or interfere with the presentation of CME activities;



Exhibit placement shall not be a condition of support for a CME activity;



No commercial promotional materials shall be promoted during an educational activity certified for credit; and,



Representatives of commercial supporters may attend an educational activity but may not engage in sales activities while in the virtual room where the activity takes place and are strictly prohibited from the sale of and/or discussion of products while attending the educational activity.



In accordance with OPEN PAYMENTS (Physician Payments Sunshine Act), if exhibitors plan to provide anything of value to physicians, it is the responsibility of your organization to maintain your own record of who accepted these items.

# Any Questions?



**Cedars-Sinai  
Office of CME**

**Phone: 310-423-5548**

**Email: [cme@cshs.org](mailto:cme@cshs.org)**